

West of the 5th

May 21st & 22nd, 2022



Sanctioned by: Endurance Riders of Alberta

Ride Manager: Rick Yavis

Ride Secretary: Natasha Dombrosky 780-668-4215

[CLICK HERE TO REGISTER](#)

HELMETS MANDATORY FOR ALL RIDERS
ALL JUNIORS (UNDER 16) MUST BE ACCOMPANIED BY A
SENIOR RIDER.



RIDE DISTANCES & FEES

All 3 distances will be offered both days

INTRO	Senior \$25	Youth \$25	Junior \$25	Start Time TBD
25 MILES	Senior \$65	Youth \$55	Junior \$50	Start Time TBD
50 MILES	Senior \$85	Youth \$75	Junior \$65	Start Time TBD

****Ride Entry Fees include horse pen**

\$15 Non-Member Fee payable for 25 & 50 mile entries. Proof of AEF Membership Required.

Ride Camp opens Friday May 20th at 1:00 pm

*****No Frills Ride - No Meals provided for Riders*****

- Horses will be required to stay in headquarter pens.
- Pens will be assigned based on number of horses entered and compatibility.
- Parking is limited - please wait upon arrival at ride camp entrance for parking instructions.
- Trail is mainly pasture with some lightly graveled roads. Hoof protection at rider's discretion.

RIDE CAMP RULES

- We have been graciously allowed to camp at the Headquarters where there is a family living. Please, if possible, leave dogs at home. Those that come **MUST** stay at their trailers.
 - ALL DOGS TO BE TIED/ON LEASH AT ALL TIMES
- Absolutely **no** fires at your trailers. We will have a community fire should restrictions allow.
 - All manure in camping area to be picked up.

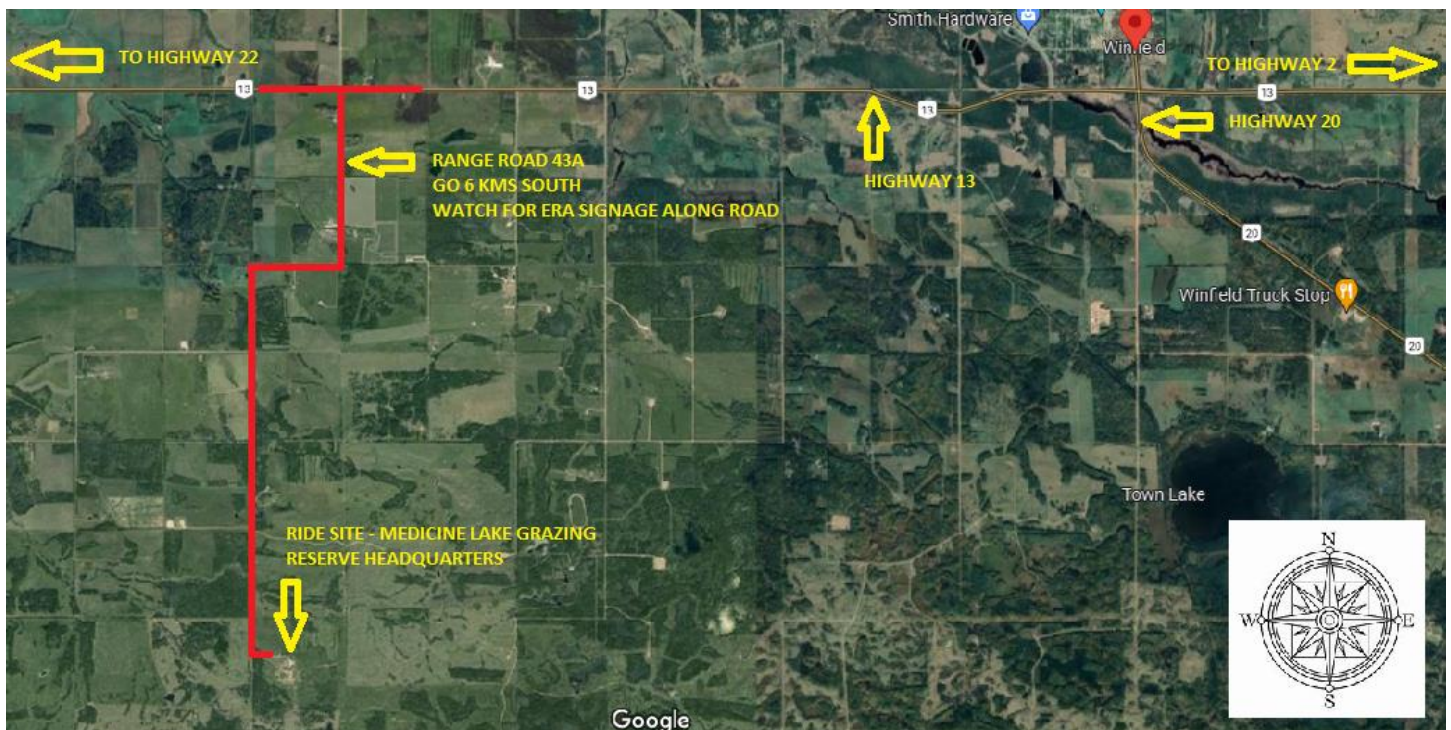
NOTE: DIRECTIONS - MEDICINE LAKE GRAZING RESERVE HEADQUARTERS Near Winfield, AB

**Another NOTE: Be prepared for any and all weather - sun, rain or snow with big winds!!
It is the long weekend in May!**

Directions: Look for ERA signs as you get nearer the destinations

- ❖ From Hwy 2 North (Edmonton) or South (Calgary) turn West on HWY 13 towards Winfield. Cross Hwy 20 (Breton - north & Rimbey -south) drive 7.3 km to RR 43A turn left (south) and follow ERA signs for 6 km to Medicine Lake Grazing Reserve Headquarters.
- ❖ From Breton or Rimbey on HWY 20 turn West on HWY 13 at Winfield. Drive 7.3 km to RR 43A turn left (south) and follow ERA signs for 6 km to Medicine Lake Grazing Reserve Headquarters.
- ❖ From Hwy 22 North or South - turn East on HWY 13 and drive 27 km to RR 43A. Turn right (south) and follow ERA signs for 6 km to Medicine Lake Grazing Reserve Headquarters.

PLEASE REMEMBER TO WAIT UPON ENTRY TO RIDE SITE FOR PARKING INSTRUCTIONS AS PARKING IS LIMITED
THEREFORE WILL BE ASSIGNED UPON ARRIVAL.



Check www.enduranceridersofalberta.com for more information on upcoming Rides